



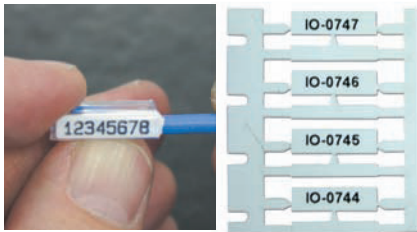
BMP™71 Label Printer

**THOUSANDS OF APPLICATIONS.
HUNDREDS OF LABELS.
ONE LABEL PRINTER.**

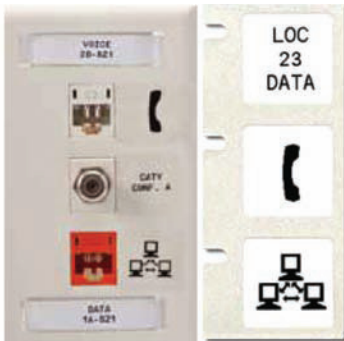
Safety and Facility ID



Durasleeve™ Labels



Die Cut Labels



Control Panel Labels



Pipe Markers



Glow In The Dark Tape



Introducing the BMP™71 Label Printer – the one way to faster, easier label printing.

The BMP™71 combines the best features and functionalities of Brady's portable label printers into one easy-to-use, top-of-the-line solution. All your major wire & cable, safety & facility and asset & component identification needs are satisfied in one printer.

One Source for Label Materials

Choose from 30 different material types and over 400 label parts — all designed with Brady's industrial strength durability. Add all of the materials from the TLS 2200® Thermal Transfer Printer and the HandiMark® Portable Label Maker and your label options are endless!

Saves Time with Foolproof Label Design & High Speed Print

At 38mm per second, the BMP™71 printer has the fastest print speed on the portable printer market. But that's not all. With built-in design wizards for electrical, voice / datacomm and general id, material recognition technology and storage space for over 100,000 label files, this printer can cut label design time in half.

Cuts Material Waste – Preview Labels As You Create Them!

With a large, full colour graphical display, the BMP™71 printer shows you exactly what your label will look like as you're creating it — so there's no guesswork or need for "test labels".

For demo videos and information on label and ribbon materials, visit www.bradyid.com.au/bmp71

BMP™ 71 LABEL PRINTER

BMP™71 Printer Features Include:

- Large, full colour graphical display shows:
 - Label material and ribbon part number
 - Label colour and size, including the amount of remaining material
 - Font size, bold, italics, underline, subscripts and more
 - Application templates
 - Multi-area print areas
 - Remaining battery charge
- Hundreds of symbols and graphics including bar codes
- Multiple font size and auto font size
- Frame, mirror print and vertical print
- Sequences and time/date stamp

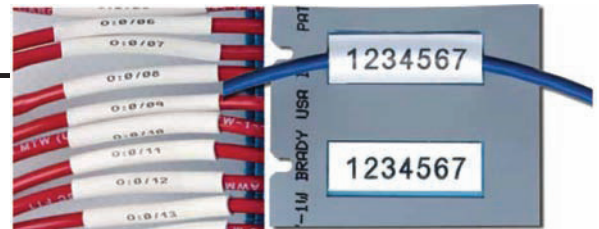
Use with **MarkWare™ Software** for additional graphics and templates for signs, labels, pipe markers and tags – perfect for 5S, TPM and lean visuals.

Use with **LabelMark™ Label Design Software** to create labels for asset id, component marking, voice / datacomm labelling, wire markers and more.

Self Laminating Labels



Permasleeve™ Heat-shrink Sleeves



www.bradyid.com.au/bmp71

Catalogue Number	Description
115158	BMP71 Printer* with LabelMark™ Software
872044	BMP71 Printer* with Markware™ Software
114881	Hardcase
114882	Softcase
871843	AC adaptor
871844	Quick Charger
114885	Battery
114886	Cleaning Kit
114887	TLS/Handimark Media Adaptor
103788	USB Cable



Brady Australia Pty Ltd
2 Bellevue Circuit
Greystances NSW 2145

Phone: 1800 620 816
Fax: 1800 805 076
www.bradyid.com.au

*Label printer ships with Hardcase, Charger/AC Adaptor, 1 Roll of M71-31-423 White Die Cut Labels, 1 R6000 Black Ribbon Cartridge, Roll Adapter, USB Cable, Quickstart Guide, a CD including the Printer Driver, Users Guide and Tutorial.

PROUDLY DISTRIBUTED BY



© 2010 Brady Worldwide, Inc. All Rights Reserved

